

# KARIBAN

**REFERENCE :** K213

**SIZES :** XS\_S\_M\_L\_XL\_XXL\_3XL\_4XL\_5XL

**COMPOSITION :**

Main fabric : Combed cotton heavy single jersey ring spun pre shrunk - 280 For body, sleeves and tape shoulder seam 100% cotton

Fabric 2 : Cotton twill - 200 For collar and tabs 100%cotton

**WEIGHT :**

Main fabric : 280 gsm

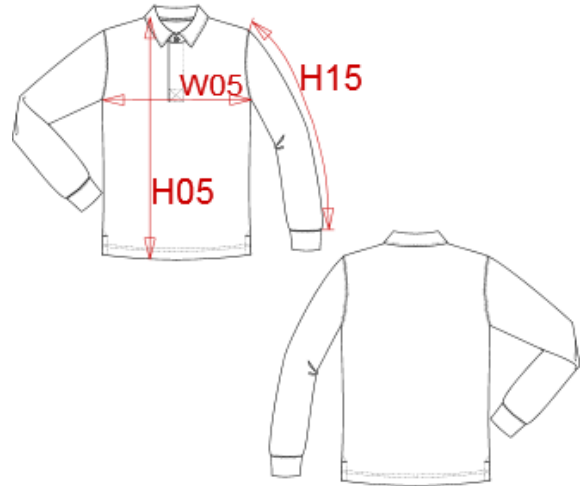
Fabric 2 : 200 gsm

**FABRIC CONSTRUCTION AND FINISHING :**

Preshrunk

**ARTICLE WEIGHT :**

406 gr/pc



DESCRIPTION	
<b>Français :</b>	Polo rugby
<b>English :</b>	Rugby polo shirt
<b>Nederlands :</b>	Rugbypolo
<b>Deutsch :</b>	Rugby-Polohemd
<b>Español :</b>	Polo de rugby
<b>Italiano :</b>	Polo rugby
<b>Português :</b>	Polo rugby

COLORS	PANTONE SERIGRAPHIE
Navy / White	296C / White
Black / White	Black / White
Light grey / White	416C / White
Light royal blue / White	7685C / White
Orange / White	1585C / White
Sky blue / White	278C / White
Wine / White	7645C / White
Red / Black	200C / Black
Dark grey / Black	432C / Black

MEASUREMENT										
Description	XS	S	M	L	XL	2XL	3XL	4XL	5XL	
<b>H05</b> Hauteur totale / Total height	69,50	71,50	73,50	75,50	77,50	79,50	82,25	84,25	86,25	
<b>W05</b> 1/2 largeur poitrine / 1/2 chest width	47	50	53	56	59	62	66	69	72	
<b>H15</b> Longueur manche avec poignet/ Sleeve length with cuff	64	65,50	67	68,50	70	71,50	73,75	75,25	76,75	

CARE LABEL				

PACKING	
Box	25 pcs / box XS => L:58cm W:36cm H:29cm GW:11.90kg NW:10.50kg S => L:58cm W:36cm H:29cm GW:12.50kg NW:10.80kg M => L:58cm W:36cm H:30cm GW:13.00kg NW:11.00kg L => L:58cm W:36cm H:30cm GW:13.10kg NW:11.70kg XL => L:58cm W:36cm H:31cm GW:13.30kg NW:11.90kg XXL => L:58cm W:36cm H:31cm GW:13.70kg NW:12.30kg 3XL => L:58cm W:36cm H:32cm GW:13.90kg NW:12.50kg 4XL => L:58cm W:36cm H:32cm GW:14.60kg NW:13.20kg 5XL => L:58cm W:36cm H:33cm GW:15.10kg NW:13.50kg